

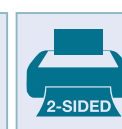
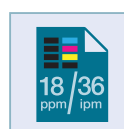
INTUITIVE SCANNING WITH A SMALL FOOTPRINT



With the ADS-1600W scanning, organising and sharing information with multiple users is simple. True wireless scanning straight to your mobile device or to the cloud combined with intelligent software allows your information to go further.

Features to optimise your workflow

- Double-sided scanning in a single pass
- 6.8cm LCD touchscreen
- Built in wireless connectivity
- Scan your documents directly to the cloud or mobile device
- Plastic ID card slot
- Compatible with Windows® and Mac
- Professional software suite included



Fast. Efficient. Intelligent scanning at your fingertips

The ADS-1600W boasts a wide range of features designed to make your day more efficient and productive. When combined with the included powerful software suite, the ADS-1600W can easily scan, share and organise your documents for easy retrieval of important information.



6.8cm LCD touchscreen



Wireless connectivity



2-sided scanning



Scan to USB

Product features:

High quality

- Up to 600 x 600 dpi
- Auto image rotation (if page placed upside down)
- Auto de-skew (corrects documents scanned out of line)
- Auto crop
- Background colour removal
- Blank page detection & removal

Compatibility

- The supplied TWAIN, WIA & ISIS drivers allow seamless integration into various document management systems

Easy to use

- 6.8cm LCD touchscreen including web connect enables scanning directly to popular cloud storage solutions
- 20 page ADF
- Built in wireless connectivity allows multiple users to share the device

Compact and flexible

- Compact dimensions 285(W) x 103(D) x 84(H)mm
- 2-sided scanning
- Scan anything from business cards, plastic ID cards, photographs, receipts and up to A4 2-sided documents

Fast and efficient

- Single sided scan speed up to 18ppm (pages per page) in mono and colour
- 2-sided scan speed up to 36ipm (images per page) in mono and colour
- Scan to various destinations including: image, e-mail, e-mail Server, file, OCR, Network, FTP, USB flash memory, cloud and SharePoint®¹
- Dedicated plastic ID card slot

Scan directly to the cloud

- PC-free scanning straight to the cloud for easy sharing and storage. Everyone within your organisation can then access the information even on their mobile devices.

The bundled suite of software includes:

The ADS-1600W is bundled with powerful software to become the perfect solution for document management and improved workflow. Helping you to access and retrieve documents whilst away from the office. Share documents to improve communication and collaboration, cutting down the amount of paper you have to travel with.

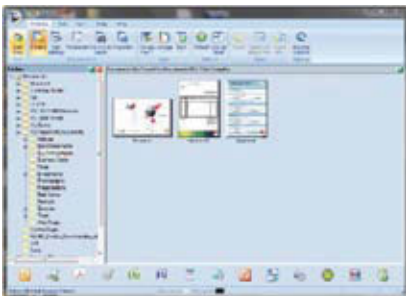
Nuance™ PDF Converter Professional 8

Allows users to improve the way they create, convert, securely share PDF files and collaborate.



Nuance™ PaperPort™ 12SE (Windows®)

Powerful document management, editing and PDF creation program with connector for Microsoft® SharePoint®.



NewSoft® Presto!® PageManager 9 (Mac)

Scan and organise digitised files. View, edit, e-mail or save files as searchable PDF, HTML, RTF, or TXT files.

NewSoft® Presto!® BizCard 6 (Windows® and Mac)

Scan and export editable contact information directly to Microsoft® Outlook® and other contact management systems.

Control Center 4 (Windows®) / Control Center 2 (Mac)

Brother Control Center enables you to customise your settings to make scanning your documents more efficient.

This scanner packs many features into such a small, compact design



IMPROVE YOUR WORKFLOW



SCAN

Scan your documents into searchable PDF files.



ARCHIVE

Archive your documents using the powerful bundled software.



SEARCH

Quickly and easily retrieve your documents for editing, viewing, sharing or printing.

ADS-1600W Specification

GENERAL

Scanner Type	Automatic document feeder (ADF), automatic 2-sided scanning
Scanning Modes	Colour, greyscale & monochrome
Image Sensor	2 x CMOS dual CIS (contact image sensor) 1 x front and 1 x rear to enable single pass 2-sided scanning
Interface	Hi-Speed USB 2.0, Wireless 802.11b/g/n
Wireless Setup	WPS, AOSS
Wireless Security	WEP 64/128 bit, WPA-PSK (TKIP/AES), WPA2-PSK (AES)
Display	6.8cm colour touchscreen

SCANNING

Standard Colour & Mono Scan Speed	Up to 18ppm (pages per minute) A4 up to 300 dpi
2-Sided Colour & Mono Scan Speed	Up to 18ppm (pages per minute), 36ipm (images per minute) A4 up to 300 dpi
Optical Scan Resolution	Up to 600 x 600 dpi (dots per inch)
Interpolated Scan Resolution	Up to 1,200 x 1,200 dpi (dots per inch)
Colour Depth	30-bit internal & 24-bit external
Gray Scale	256 levels
Supported File Formats	JPEG, TIFF, & PDF (standard, archive (PDF/A), searchable and password protected)
Scan to USB	Scan directly to a USB flash memory drive, removing the requirement for a PC
Scan to E-mail	Scan documents directly into your e-mail communications software
Scan to OCR	Scan documents directly into your word processing application, e.g. Microsoft® Word, for instant editing
Scan to File	Scan directly to a file on your computer or network
Scan to Image	Scan directly into your preferred image editing software
Scan to Searchable PDF	Scan documents into a PDF file, which enables users to search for key words inside it
Scan To Network	Scan directly to a network folder (Windows® only)
Scan to Mobile Devices	Scan directly to a mobile device with the Brother iPrint&Scan app
Scan to Cloud	Scan to the following web services: Box, Dropbox, EVERNOTE®, Facebook, FLICKR®, Google Drive™, PICASA™ & SkyDrive®
Scan to E-mail Server	Scan documents directly to E-mail addresses via your E-mail server
Scan to FTP	Scan directly to an FTP server

SCANNER DRIVER

Windows®	ISIS², TWAIN & WIA (Windows® 8, Windows® 7, Windows® Vista 32 & 64 bit versions & Windows® XP 32 bit versions)
Macintosh	TWAIN & ICA (Mac OS X v10.6.8, v10.7.x, v10.8.x)
Linux	SANE²

SOFTWARE FOR WINDOWS®

Brother Control Center 4	Easy to use scan software from Brother
NewSoft® Presto! BizCard® 6	Global business card management solution
Nuance™ PaperPort™ 12SE	Powerful document management, PDF creation and editing, including connector for Microsoft® SharePoint®
Nuance® PDF Converter Professional 8	Powerful PDF creation and management software

SOFTWARE FOR MAC

Brother Control Center 2	Easy to use scan software from Brother
NewSoft® Presto! BizCard® 6	Global business card management solution
NewSoft® Presto!® PageManager® 9	Document management & sharing program

PAPER HANDLING

Paper Input	Up to 20 sheets
Custom Paper Types & Sizes	Between 51mm - 215.9mm in width & 70mm - 297mm in length
Long Paper Scanning	Yes, up to 215.9mm wide & 863mm long (1 at a time)
Business Card Scan Support	Yes (1 at a time)
Plastic Card Scan Support	Yes (1 at a time)
Receipt Scanning	Yes, with carrier sheet

DUTY CYCLE

Maximum Daily	Up to 500 pages
---------------	-----------------

WEIGHTS & DIMENSIONS

With Carton	380(W)x170(D)x207(H)mm 2.6KG
Without Carton	285(W)x103(D)x84(H)mm 1.6KG

ENVIRONMENT

Power Consumption (Scanning)	14W
Power Consumption (Ready)	4W
Power Consumption (Deep Sleep)	1.5W
Power Consumption (Off)	0.25W
Sound Pressure Level (Active)	47dB or less
Sound Power Level (Active)	59dB or less



Brother Online

Brother offer various software and services to help improve your business efficiency and workflow. To see how we can help your business please visit: www.brother.co.za

¹Requires software that comes bundled with the machine

²Downloadable free of charge from <http://solutions.brother.com>



www.brother.co.za
<http://solutions.brother.com>

brother
at your side

Brother International South Africa

96 Sovereign Drive, Route 21 Corporate Park, Irene
Tel: +27 (0) 12 - 345 5332 Fax: +27 (0) 12 - 345 3886

All specifications correct at time of printing. Brother is a registered trademark of Brother Industries Ltd.
Brand product names are registered trademarks or trademarks of their respective companies.



Working with you for a better environment
www.brotherearth.com



Japanese Excellence
For Over 100 Years